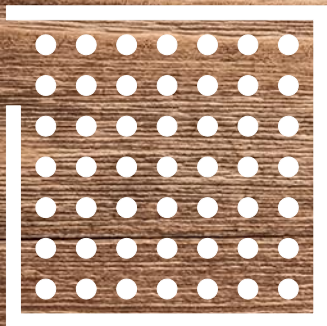


# LEAN IN STATSBYGG

**From bottom up and  
driven by enthusiasts  
to portfolio strategy**

LIPS 2016 Helsingør  
Synnøve Lyssand Sandberg  
13.9.2016





BUILDING



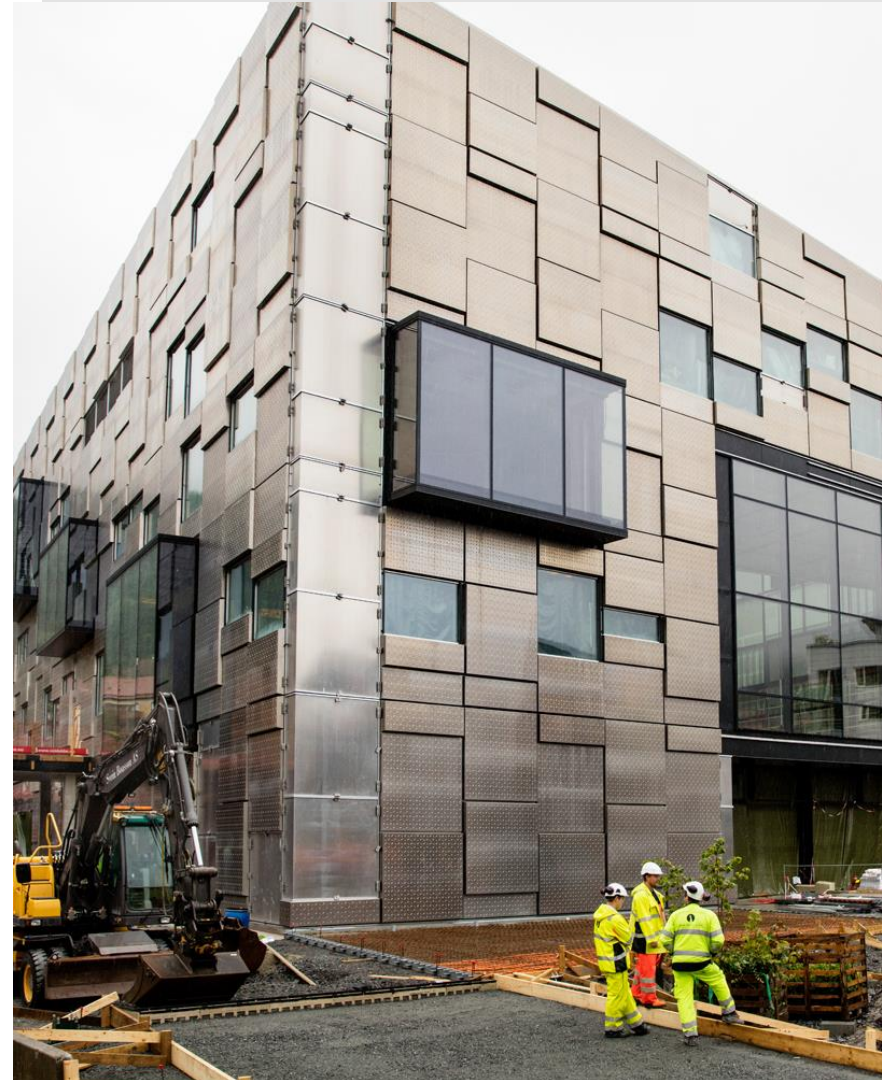
PROPERTY  
MANAGEMENT



CONSULTING

# STRATEGIC DIRECTION

- Flexible building space suiting our clients' needs
- Effective office space for governmental purposes
- Environmentally responsible
- Shaping tomorrow's construction and property industry



## TARGET FOR STATSBYGG AS A BUILDING COMMISSIONER



*Jan Tore Sanner,  
Minister of Local  
Government and  
Modernisation*

sum actual cost for all completed buildings last 5 years

-----  
sum budget cost for all completed buildings last 5 years

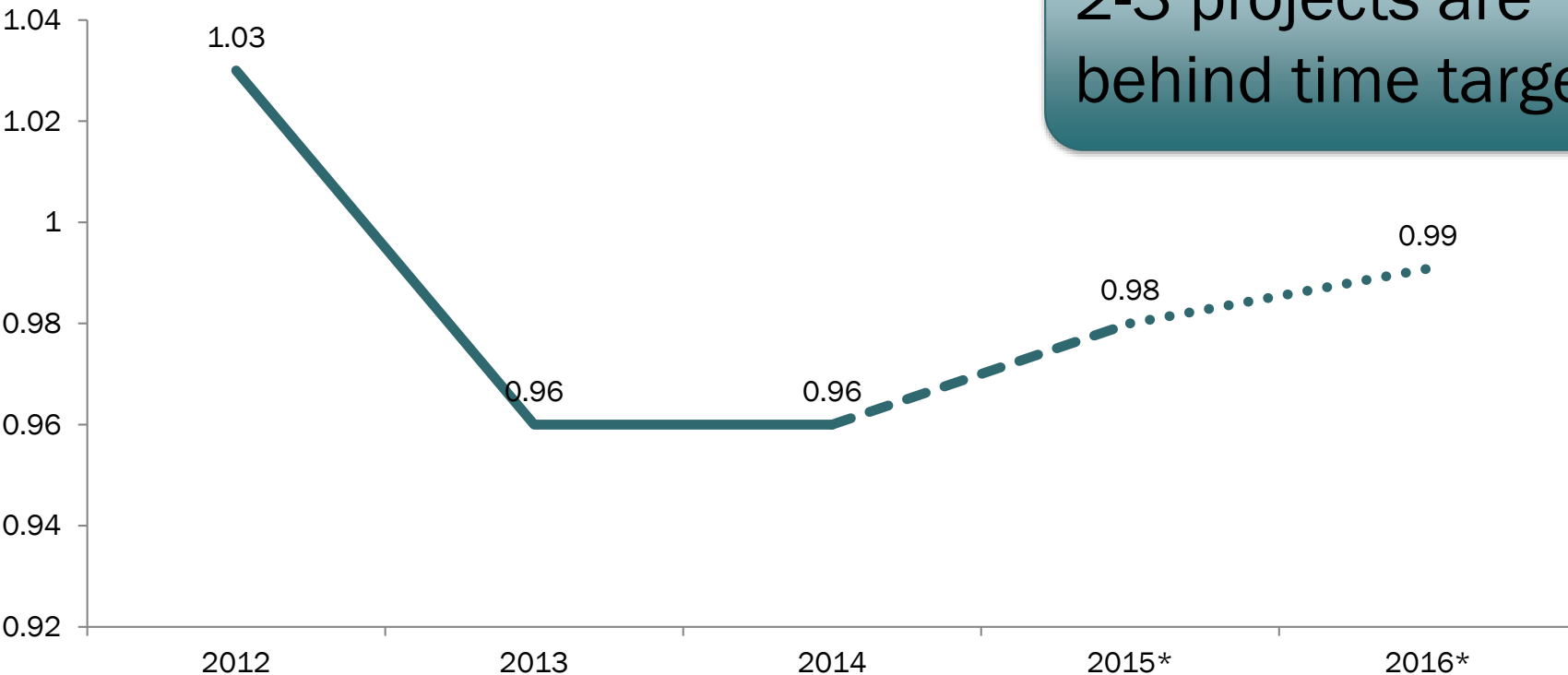
Result

< 1

0,95

# Statsbygg is on cost target

(mål fra KMD: < 1)



2-3 projects are behind time target

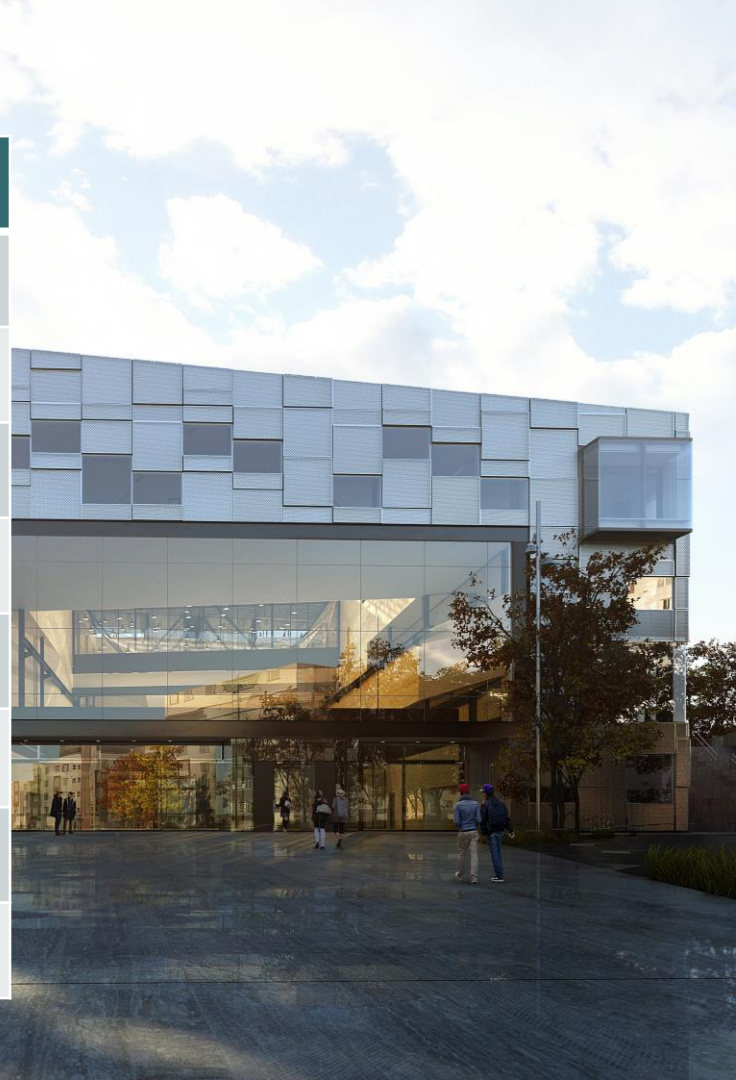


# LEAN PRACTICES IN STATSBYGG

- from first LEAN project in 2010; expanded by word-of-mouth
- approximately 10 projects have used or implemented elements of LEAN
- 3-4 projects have fully used lean in the construction phase (Domus Medica, Norwegian School of Economics, Haugesund Prison, Academy of Art and Design)
- One project has so far used it fully in the detailed design phase (Academy of Art and Design). The lean design process has been internally developed by the project team
- Lean practices in the projects: Takt time planning, Control-areas, BiM-kiosks. Main focus on flow efficiency. Low focus on KPIs
- The internal Statsbygg academy: Lean basic course.
- Extensive training for those interested



LEAN-projects	time	cost
Statsarkivet Bergen	✓	✓
Domus Medica Oslo	✓	✓
NHH Bergen	✓	✓
Universitetet i Nordland Bodø	✓ under construction	
Haugesund fengsel	✓	✓
Urbygningen Ås	👎	👎
Bergen Museum	✓	✓
Kunsthøyskolen i Bergen	✓ under construction	





# THE STATSBYGG LEAN FUTURE

- Measure improvements
- Strengthen the strategic aspect – directed use of LEAN
- Keep learning and improving





# LEAN is an instrument to achieve...

Statsbygg's vision and strategy

Portfolio cost, time and quality targets

Project specific targets

Directed and supported by management and executed in projects

Continuous improvement

Enforce value creating activities