



Signe Mehlsen,
Byggeriets Arbejdsmiljøbus

SIDE EFFECTS OF LEAN CONSTRUCTION





Programme

Time	Activity
9:00	Welcome
9:05	Introducing the programme and Signe Mehlsen
9:20	Anne Hedegaard (North Region in Denmark): Lean and sustainability
9:45	Anna Åkesson (Nye Karolinska Sykehus, Sweden): Lean og sustainability
10.10	Discussion
10.45	End of session



The Preventive Service Bus

Financed by the employer and employees organisations



8 consultants



Share best practice concerning health and safety



Finding the best solutions



Visiting both contractors at home and on sites



Financed through the collective agreements





Knowledge center

- Concerning the health and safety obligations of clients and advisors
- Financed through the employer and employees organisations and private funding
- 2016-2018



**BYGHERRE
FORENINGEN**



Foreningen af
Rådgivende Ingeniører
FRI

**DANSKE
ARKITEKT
VIRKSOMHEDER**



VIDENTJENESTE
FOR BYGHERRER OG RÅDGIVERE



Knowledge center



Hotline



Meeting activities



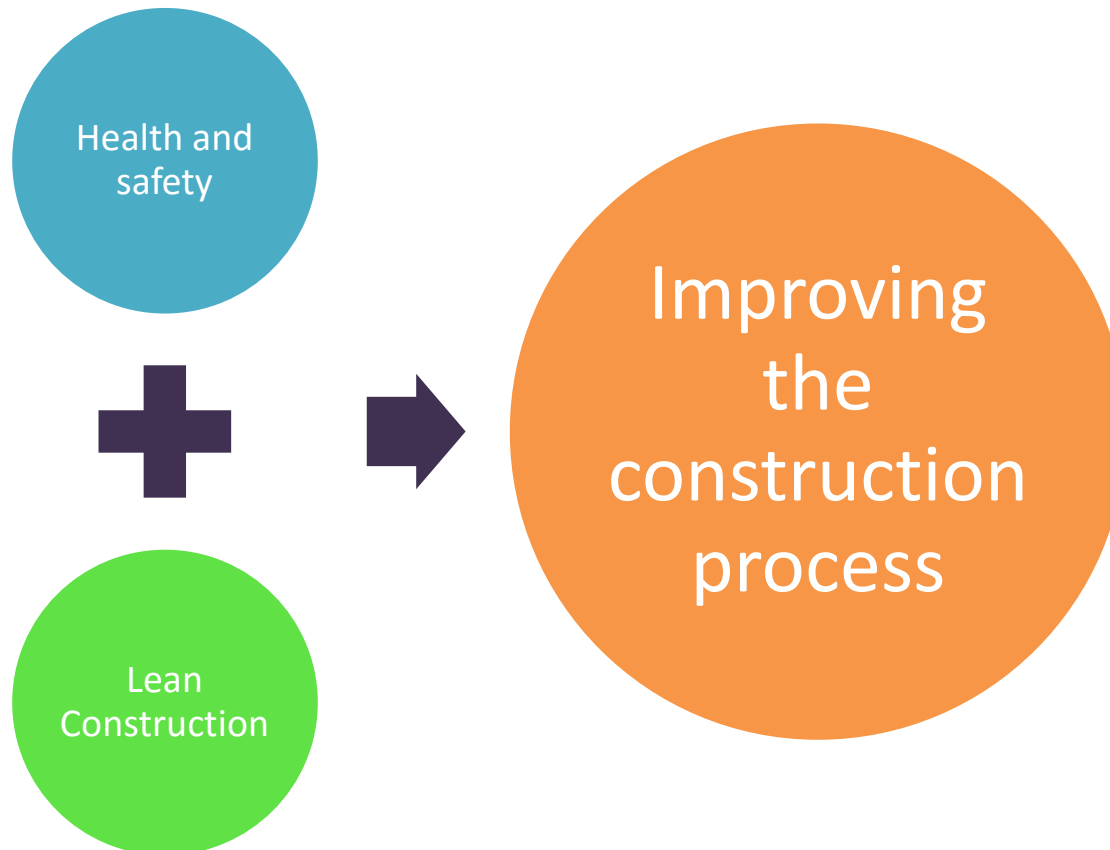
Guidance documents



Exchange of experiences and establish networks between clients, advisors and contractors



Meetings with LC-DK





Meetings with LC-DK

- Synergy between health and safety and lean construction
 - 5 meetings
 - 360 participants
- Renovation and refurbishment projects
 - 3 meetings
 - 210 participants





Meetings with LC-DK

1. Design of work processes
2. Health and safety should be a part of planning on site
3. Cooperation is necessary, but difficult
4. Client must be a role model



Experiences

Talk to your neighbor:

- *What is from your perspective the most surprising side effect of lean construction?*



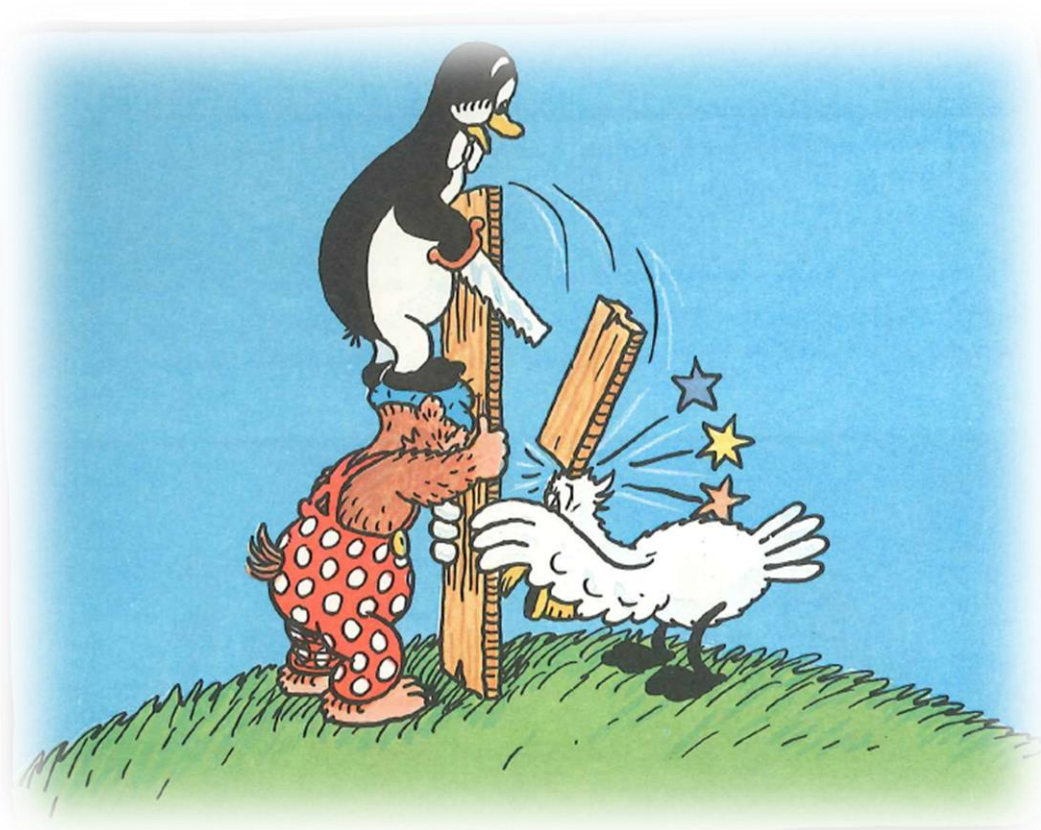
Experiences

Talk to your neighbor:

- *What have you learned from the presentations and discussion concerning the side effects of lean construction?*



Thank you!



Kilde: Rasmus Klump bygger radiostation



VIDENTJENESTE
FOR BYGHERRER OG RÅDGIVERE